

Town of Secaucus Community Forestry Management Plan 2014 – 2018



Prepared by:

Hometown Forests, LLC

Pam Zipse,
Forester, NJ Certified Tree Expert #426

Mike D'Errico,
Forester & Tree Expert Consultant

September 19, 2014

The Town of Secaucus Community Forestry Management Plan 2014 – 2018

Shade Tree Committee

Catherine Carabott, Chair
Richard Fairman
Elizabeth Koster
Anna Conklin
Gerard Grossi
Richie Johnson
John Dubiel, Assistant Superintendent of Public Works

Jim Clancy, Council Liaison
Marilyn DePice, Secretary

Environmental Department

Amanda Nesheiwat, Environmental Coordinator

Department of Public Works

Kevin O'Connor, C.P.W.M., Superintendent of Public Works
John Dubiel, Assistant Superintendent of Public Works
Frank Sasso, Administrator of Tree Conservation

Mayor and Council


Mayor Michael Gonnelli
Councilman James Clancy
Councilman Robert Costantino
Councilman Mark Dehnert
Councilman Gary Jeffas
Councilman William McKeever
Councilwoman Susan Pirro

The Town of Secaucus Community Forestry Management Plan

Table of Contents

Municipal Information Form	3
Introduction	4
• Mission Statement	
• Goals and Objectives	
• Liability Statement	
Community Overview	8
Community Forestry Program Administrative	11
Community Map	13
Training Plan	15
Public Education/Awareness/Outreach	17
Statement of Tree Budget	20
Statement of Plan Implementation	22
• Tree Inventory	
• Hazard Tree Identification	
• Tree Planting	
• Tree Maintenance and Care	
Community Stewardship Incentive Program (CSIP)	35
Appendices	38

I. MUNICIPAL INFORMATION FORM

Municipality Town of Secaucus
County Hudson County
Address 1203 Paterson Plank
Secaucus New Jersey 07094
Contact Name and Title Amanda Nesheiwat Environmental Coordinator
Phone # 201 - 864 - 7336
Fax # and E-mail anesheiwate@secaucus .net
Organization Name Secaucus Shade Tree Committee
Mayor/County Freeholder's Signature 
Date of Management Plan Submission October 2014
Time Period Covered in Management Plan 2014 - 2018

Community Stewardship Incentive Program (CSIP) Practices Identified in Management Plan

- ☒ CSIP #1 Training
- ☒ CSIP #2 Community Forestry Ordinance Establishment
- ☒ CSIP #3 Public Education and Awareness
- ☒ CSIP #4 Arbor Day
- ☒ CSIP #5 Tree Inventory
- ☒ CSIP #6 Hazard Tree Assessment
- ☒ CSIP #7 Storm Damage Assessment
- ☒ CSIP #8 Tree Maintenance and Removals
- ☒ CSIP #9 Insect and Disease Management
- ☒ CSIP #10 Wildfire Protection
- ☒ CSIP #11 Tree Planting
- ☒ CSIP #12 Tree Recycling
- ☒ CSIP #13 Sidewalk Maintenance Program
- ☒ CSIP #14 Storm Water Management
- ☒ CSIP #15 Other

Official Use Only Certification

The above named municipality/county has made formal application to the New Jersey Forestry Service. I am pleased to advise you that after our review, the NJ Forestry Service has concluded that this plan meets the standards set forth by the State and the NJ Community Forestry Council and is approved for the period covered.

Signed


State Forester

4/25/14
Approved date

II. INTRODUCTION

This plan was developed for the Town of Secaucus and covers the time period of 2014 through 2018, with transition plans for the year 2019. In developing this third 5-year plan, Secaucus is seeking to build upon the successes of the past while increasing public awareness and acceptance of an expanded tree planting campaign and a managed and healthy community forest. Continued participation in the programs of the NJ Shade Tree and Community Forestry Assistance Act will keep Secaucus focused on the goals of the shade tree program for the benefits that community trees provide to the residents of and visitors to their Town.

Mission Statement

To insure the quality of life in the Town of Secaucus by providing for the care and management of the community tree resources through sustainable tree planting, tree maintenance, hazard tree removal, and public outreach, specifically public awareness of the Town ordinances and programs regarding ordinance enforcement.

Goals and Objectives

The Secaucus shade tree program has established the following as the long-term goals and objectives to be achieved through following this Community Forestry Management Plan.

Long Term Goals and Objectives

Tree Conservation Ordinance

- Complete and approve updates to the ordinance
- Improve monitoring and enforcement
- Promote the ordinance to make residents aware of the new requirements

Street Tree Inventory

- Complete the Street Tree Inventory funded by Sustainable Jersey
- Enter the data collected into the *i-Tree Streets* inventory software program and generate all available reports
- Use these reports to demonstrate the benefits of trees to residents and decision makers
- Use inventory data to generate tree cover goals and guide tree planting decisions
- Use inventory data to generate a list of high priority maintenance needs

Develop Municipal Tree Cover Goal

- Utilize the technical resources for determining tree cover on the Sustainable Jersey website (www.sustainablejersey.com) to identify the current percentage tree cover in Secaucus.
- Adopt a Municipal Tree Cover Goal(s) for Secaucus at a formal meeting of the Shade Tree Committee.

Prioritize and Budget for Addressing Identified Hazards

- Prioritize the maintenance needs identified by the Street Tree Inventory
- Work with the Mayor & Council to ensure that all hazards are addressed within a reasonable timeframe

Update “Approved Species” Tree Planting List

- Research new species to be included on the “Approved Species” planting list
- Use information from the Street Tree Inventory to guide decisions
- Remove from the list trees that have not performed well in Secaucus, and add species with high urban tolerance, salt tolerance and flood tolerance

Develop Tree Planting Specifications

- Use the American Standard for Nursery Stock and ANSI Z60.1 to develop formal tree purchase and planting specifications for Secaucus
- Monitor tree plantings for adherence to specifications
- Ensure that all tree plantings under utility lines are of approved, utility friendly species
- Distribute the new specifications to all planting contractors and review with in-house staff

Street Island Recommendations / Remediation

- Identify patterns in tree damage caused by road salt along the Front Street Islands
- Conduct soil tests and develop a soil remediation plan and a tree replacement plan
- Make improvements to the soil and complete replacement plantings with salt and urban tolerant species
- Publicize remediation plantings highlighting the decision making process

Tree Acceptance Incentive Program

- Discuss possible incentives that could be offered to residents to alleviate resistance to tree plantings
- Determine the most reasonable options and plan for implementation
- Promote the planting of “sidewalk friendly” trees at the time of slab replacement through the existing sidewalk slab incentive program
- Apply for grants as appropriate

Public Relations / Tree Planting Campaign

- Begin a town-wide campaign to promote the benefits of trees and gain support for tree plantings
- Utilize the Environmental Department website to post information on the benefits of trees (from the *i-Tree* reports), new ordinance requirements and other tree related documents, and Shade Tree Committee contact information
- Develop identification badges and street tree fact sheets to aid in the promotion of the tree planting program
- Expand the tree planting campaign into the business district
- Develop corporate partnerships to further tree planting opportunities
- Apply for grants as appropriate

Emerald Ash Borer Identification and Remediation

- Identify the location of ash trees throughout Secaucus
- Inspect for EAB infestation
- Make decisions regarding treatment
- Inform the public via the Environmental Department website and at other public outreach programs
- Utilize the same identification and remediation strategy to address other potential risks to the community forest identified over the course of this management period

New Resident Welcome Packet

- Update packet of important tree related information to distribute to new residents when they move into Secaucus
- Share the information with local real estate agents

Improve Communication with Public Service Electric & Gas

- Invite a representative from PSE&G to attend a Shade Tree Committee meeting
- Discuss long term goals, such as a utility tree replacement program
- Establish ongoing communication

Storm Preparation

- Use the *i-Tree Storm* utility to develop a pre-storm assessment report
- Prepare for collecting post-storm information to generate a report to request FEMA assistance, if necessary

In addition to these long term goals and objectives, the Secaucus shade tree program plans to complete the following Every Year Events throughout the course of this five-year management period.

Every Year Events

- Conduct monthly Shade Tree Committee meetings (summers off)
- Develop Annual Budget & Spending Plan
- Identify & Distribute Annual Task Responsibilities
- Celebrate Arbor Day with all Secaucus schools
- Participate in the Secaucus Green Fest
- Support & Promote the Chipper Program through the DPW
- Support & Promote the Sidewalk Safety Program through the DPW
- Support & Promote Tree Planting and Pruning completed by the DPW
- Support & Promote contracted tree work including tree planting, pruning, recycling, and hazard tree removal organized and made possible by the DPW
- Continue to seek out grants and donations to boost tree planting efforts in Secaucus
- Complete and Submit the annual Tree City USA Application
- Support & Promote the development of the “Annual Report of Previous Year’s Work” detailing the planting, removing and maintaining of trees by the DPW

- Complete and Submit the Annual Accomplishment Report to NJ State Forestry Services and the Secaucus Mayor & Council
- Maintain Approved Status under the NJ Shade Tree & Community Forestry Assistance Act, including an annual training program

Liability Statement

Although street trees and the community forest is an asset to Secaucus, it is inevitable that they mature and require care, maintenance and eventually replacement. Care and maintenance, in addition to planting “the right tree in the right place” can help insure that community trees not only contribute to the environmental and economic vitality of Secaucus, but also reduce the potential hazards to public safety. The Town of Secaucus must work within a reasonable budget that may not be able to meet each and every need of the community forest immediately. Therefore, it is the intent of this five year Community Forestry Management Plan and ongoing community forestry efforts in Secaucus to focus available resources to the greatest need and step-by-step work towards a healthy forest with a corresponding reduction in risks to public safety.

The Town of Secaucus believes that by taking logical steps outlined and documented in this management plan, that public support will be obtained for plan implementation and long term benefits to the environment and public safety will be achieved.

By maintaining “Approved Status” under the New Jersey Shade Tree and Community Forestry Assistance Act, Secaucus will become more pro-active in the care of its trees. Through inventory and hazard tree assessment, the Shade Tree Committee and Department of Public Works will position themselves to take corrective action prior to structural tree failure and other hazardous tree related conditions. It is acknowledged, however, that not all hazardous conditions will be predicted. Good maintenance and care will reduce the probability, but unexpected events may still occur.

Following this Management Plan will demonstrate that the Town of Secaucus is devoting reasonable levels of resources in a planned manner to reduce the number of tree related accidents and thereby reduce its exposure to liabilities and increase public safety.

III. COMMUNITY OVERVIEW

The Town of Secaucus had their first Community Forestry Management Plan approved in the year 2000, and their second approved in 2009. Secaucus maintains a very active shade tree program with a well-trained and dedicated in-house staff as well as an active volunteer component, and the achievements of the past management cycles can be seen in the health and vitality of Secaucus' street tree resource. Building on the programs that have already been established and continuing to increase the town's tree resources are the overarching goals of this five year management period.

Secaucus funds several annual programs, both in-house and contractual, through their Community Forestry Budget. These include annual tree plantings, tree maintenance, hazard tree removals, a sidewalk safety program, a chipper program for tree recycling, and an Administrator of Tree Conservation to oversee the program. In 2013 Secaucus planted 188 trees by contract and approximately 50 more by in-house staff, including trees planted for the annual Arbor Day celebration. There is a two man in-house tree crew dedicated to maintenance of trees up to 15 feet in height two days per month, and a contract is maintained for hazard tree removal and pruning of larger trees. In 2013 approximately 100 trees were pruned, and 10 were removed. Secaucus maintains a sidewalk safety program that provides for in-house sidewalk replacement with careful root pruning for the cost of \$100.00 per slab, and completes about twenty sidewalk replacements per year. The popularity of this program has left the town with a running backlog of about 50 sidewalk slabs. In addition, Secaucus' tree recycling program has a two man crew dedicated one day per week for chipping wood waste, and an annual contract for leaf, woodchip and log disposal.

Important goals of the previous management periods have included reforestation to improve canopy cover, updating the Tree Conservation Ordinance, improving ordinance enforcement, and completing a Street Tree Inventory. Significant progress has been made, but problems were encountered.

Secaucus was fortunate to be included in the NJ Community Forestry Program's Cool Cities Initiative in 2007 and 2008, and through the initiative, 300 new trees were planted. However, Secaucus had the highest refusal rate of any of the participating Cool Cities municipalities, with approximately 50% of the residents offered refusing the free tree. In addition, there has been an ongoing problem of residents re-developing housing lots to increase the size of the house, and subsequently reducing the size of the "green" space. In many cases trees are removed, and there is not adequate space left for replacement plantings. Updates to the Tree Conservation and Landscaping ordinances have addressed this problem, providing for fines for tree removal without a permit and outlining minimum requirements for landscaped surfaces, but the underlying issue of the lack of understanding among the residents of the benefits of trees still remains. A Public Relations / Tree Planting Campaign to promote the benefits of trees in Secaucus will be a primary goal outlined within this plan.

Secaucus completed its first street tree inventory in 1992. The goal of this inventory was to quantify problems in the tree resource and set program goals and objectives. Unfortunately,

this inventory was lost in a computer crash, and no information from the original inventory can be found. It is currently unknown whether recent tree plantings have outpaced tree losses.

During the last five-year management period, Secaucus received a grant from Sustainable Jersey to complete a Street Tree Inventory, which will once again provide data to illustrate problems within the tree resource, generate a list of priority maintenance needs, quantify canopy cover, and identify species composition. Data collected from this inventory will be used to inform tree planting and maintenance decisions throughout the five years of this management period. In addition, the data collected for this inventory will be run through *i-Tree* inventory software to generate reports showing the monetary values of the benefits that street trees in Secaucus provide in terms of energy savings, storm water mitigation, carbon sequestration, air quality improvements, and aesthetic value. These reports will be used as supporting documents to promote the tree resource to the Mayor and Council as well as to the residents of Secaucus. It is hoped that this will help to gain support from the residents for tree conservation and increased tree planting.

In developing this plan, the Secaucus Shade Tree Committee determined that the highest priority goal of this planning period is to increase tree planting, with ordinance establishment, public education & awareness, tree maintenance & removals, and training following close behind. These topics will comprise the majority of the 2014 – 2018 plan, and goals and objectives reflecting these priorities will be woven throughout each section as they build on and support each other to shape the future of Secaucus' shade tree program. While tree planting will be the primary focus of this 5-year management period, as tree canopy is increased to target levels, the focus will shift to scheduled maintenance of the tree resource. A foundation will be laid to support the development of this scheduled maintenance program over the subsequent management cycle.

The Town of Secaucus recognizes that following an approved Community Forestry Management Plan benefits the community by helping to keep focus and momentum on the goals of the shade tree program. In addition, Approved Status under the New Jersey Shade Tree and Community Forestry Assistance Act will provide liability protection for shade tree program volunteers, and will make Secaucus eligible for Community Stewardship Incentive Program grants to fund the goals of the plan. The annual reporting required for the Annual Accomplishment Reports helps to highlight the every year accomplishments of the shade tree program, and brings attention to these accomplishments on both the local and state level. Finally, the training program requirements under the Act will help to insure that all representatives of the Secaucus shade tree program are provided with the training they need to successfully carry out the goals and objectives of the plan. Members of the Secaucus Shade Tree Committee, the Environmental Department, and the Department of Public Works look forward to another five years of following an approved Community Forestry Management Plan, and to all the accomplishments that will come of it for the good of their Town.

Municipal Master Plan

The Municipal Master Plan for the Town of Secaucus was last updated in 2009. The current Master Plan does not make specific reference to the Shade Tree Committee or to any of the policies or projects of the Secaucus Shade Tree Program. It is recognized, however, that the Shade Tree Program is critical to maintaining the quality of life for the residents of Secaucus, and is an integral part of the municipal structure.

The next revision of the Master Plan is scheduled for 2019. The Environmental Department and the Shade Tree Committee will petition to be included in the planning process and integrated into the 2019 Master Plan.

Secaucus also falls under the direction of the Meadowlands Commission Master Plan. In addition to inclusion within the Municipal Master Plan, the Secaucus Environmental Department will seek representation on the Meadowlands Commission to promote the work that Secaucus is doing to ensure sustainability at home and beyond.

Ordinances and 2014 - 2018 Goals and Objectives

The Shade Tree Committee has very recently completed updates to the "Tree Conservation" ordinance, which have addressed some of the issues encountered over the last management period. There is now a fine structure in place for trees that are removed without a permit, and there is a requirement for the planting of replacement trees in the event that a tree is removed. The cost of tree replacement is the responsibility of the homeowner, and the work will be completed or contracted by the Secaucus DPW. In addition, the "Landscaping" section of the Secaucus Town Code establishes guidelines for minimum landscaped surfaces and outlines acceptable plans for street tree and landscape buffer plantings. Both of these documents are included in the Appendix to this plan.

Now that the new ordinance has been adopted, it is necessary to work on informing the residents of the changes, and creating a structure for consistent enforcement. Announcements and information regarding the requirements of the new ordinance and the reasons for them will be included in public outreach materials developed over the course of this five year plan. In addition, the Shade Tree Committee will work with the Administrator of Tree Conservation for the Department of Public Works and the appropriate Zoning officials to ensure that the ordinance is being enforced and to assist with questions from residents when necessary.

Objectives to seek representation within the Secaucus Municipal Master Plan and on the Meadowlands Commission will be included for 2019, the transition year between this 5-year plan and the next.

IV. COMMUNITY FORESTRY PROGRAM ADMINISTRATION

The Town of Secaucus has developed a dynamic and successful community forestry program. This is due in part to the creative way the town has chosen to oversee and run the tree care program. With oversight from the Mayor and Council the administration, implementation and supervision of Secaucus' shade tree program are shared by the Department of Public Works, the Shade Tree Committee, and the Environmental Department. Other agencies including the Department of Health, and county and state agencies, also play roles and provide support. The roles of each are well defined and understood.

The Mayor and Council provide the leadership that enables the Town departments and the volunteers of the Shade Tree Committee to succeed together. This is evident by the long history of support for the shade tree program, enabling such outstanding programs as adopt a block, Arbor Day in Schools, new tree ordinance establishment, 21 years of Tree City USA recognition, and external and internal financial support.

The Shade Tree Committee functions primarily as the municipal advisory group on all tree-related issues. This committee consists of six members who are appointed by the Mayor and Council. Although this committee is advisory, it has provided Secaucus with a public volunteer component to its tree care program and this has reaped tremendous benefit in the way of public outreach through Arbor Day activities, tree selection and planting guidance, and recommendations on satisfying the requirements of the NJ Shade Tree and Community Forestry Assistance Act. This Committee is also important in bringing in external support for the shade tree program with trees and grant dollars from businesses and organizations such as the Meadowlands Commission and Sustainable Jersey.

The Administrator of Tree Conservation, along with the Superintendent of Public Works, is responsible for the care and maintenance of any publicly owned trees. These individuals enforce and administer all the provisions of the laws governing the care of public trees in Secaucus. The Administrator of Tree Conservation also oversees all the work performed by the DPW crews, including trimming trees less than 15 feet in height, and outside contractors hired by the town for tree trimming above 15 feet, as well as tree removals and tree plantings.

The Department of Public Works tree crew carries out the day to day maintenance on Town controlled trees less than 15 feet in height. The DPW crews also assist with planting trees donated by outside entities such as Home Depot and the Meadowland Commission. Each week under the Chipper Program, a two man DPW crew is available to assists the residents in cleaning up vegetative debris.

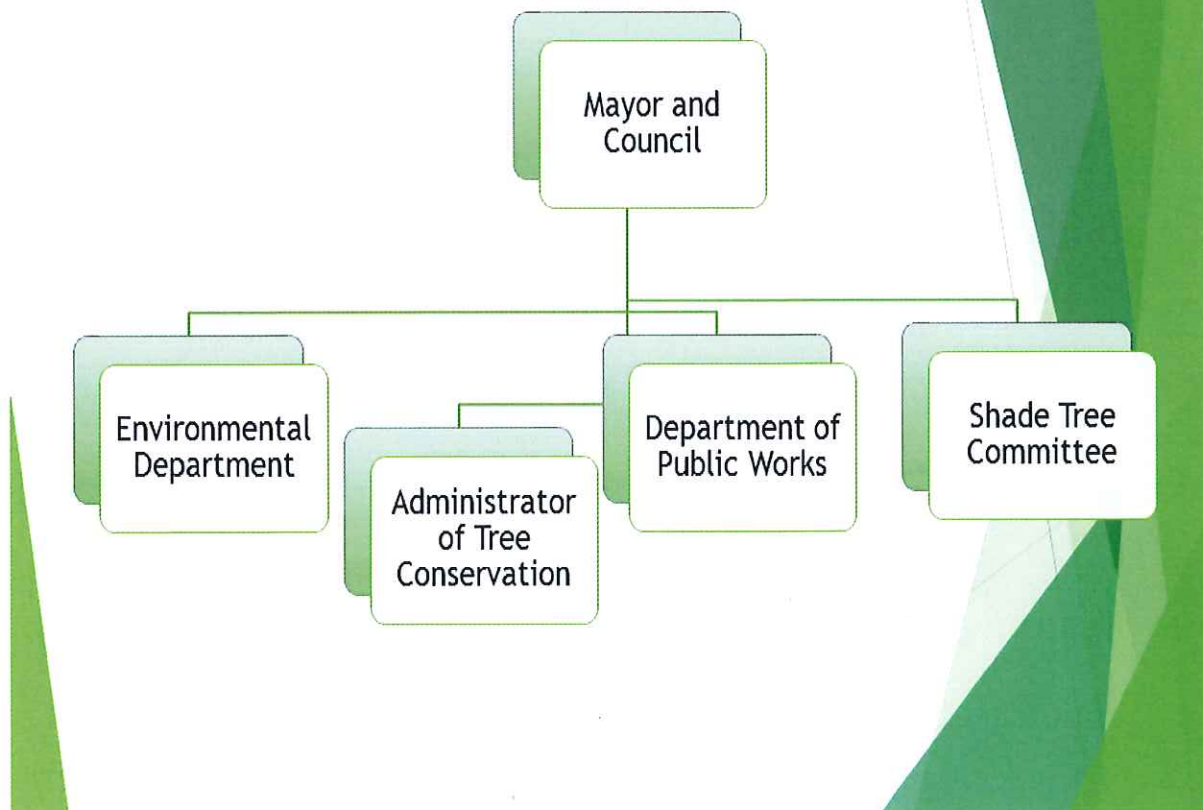
The Environmental Department assists in coordinating the efforts of all the entities working with trees and the environment in Secaucus. This unique department looks at environmental sustainability and promotes the philosophy that sustainability involves everyone. The Environmental Coordinator holds a position on the Shade Tree Committee, and works to promote the seamless integration of all environmental initiatives throughout Secaucus.

Currently, any tree related issue or concern that is received by the Township, including emergency situations, is forwarded to the Administrator of Tree Conservation. The Administrator of Tree Conservation determines the appropriate action steps to be taken based on the nature of the request. This may involve arranging for an arboricultural action by the DPW tree crew, or arranging for an outside contractor to complete the necessary work.

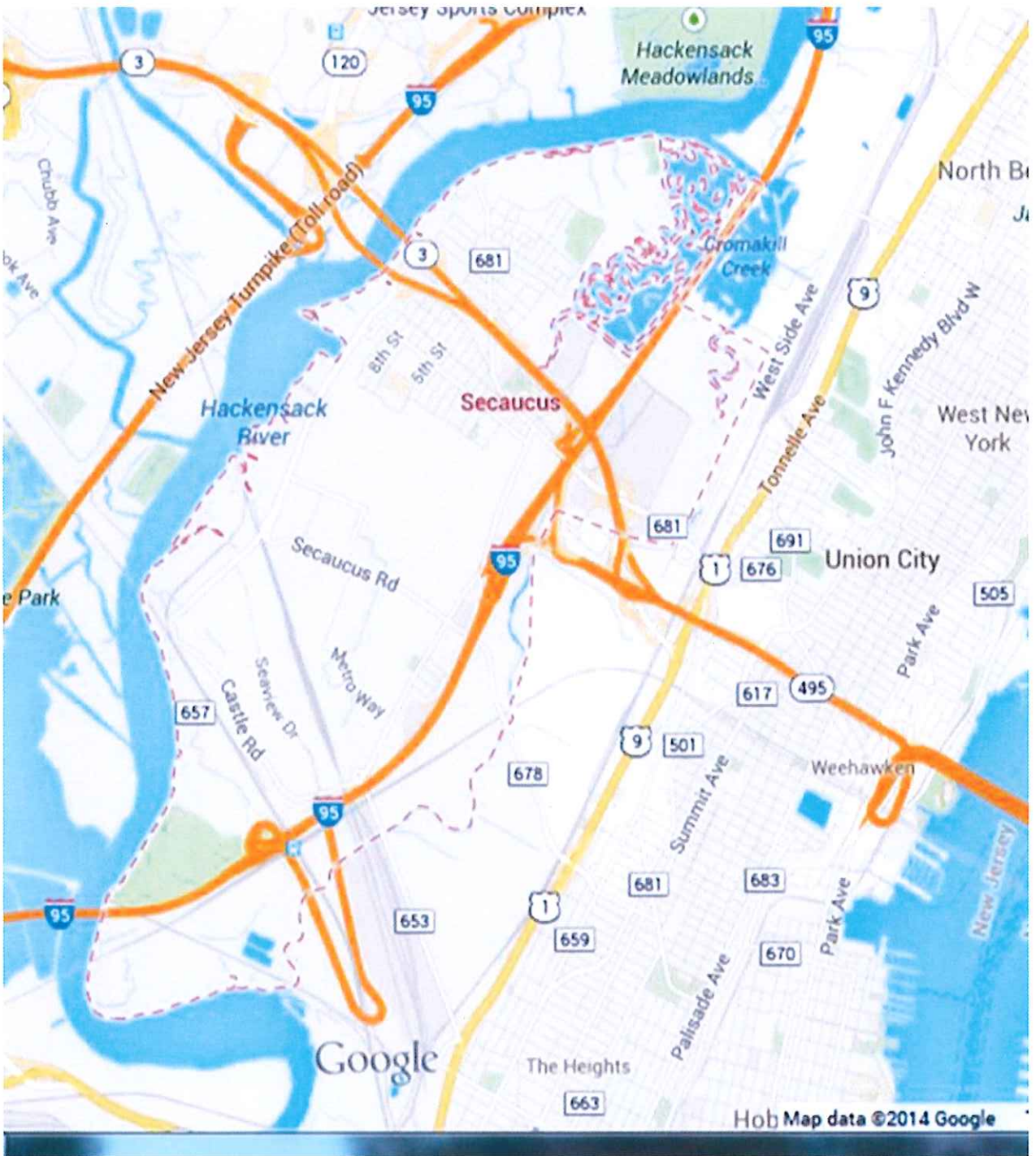
Requests for work involving County trees is coordinated with the County and performed by their resources. However, the county has purchased trees in the past and provided them to Secaucus for planting on county rights of way.

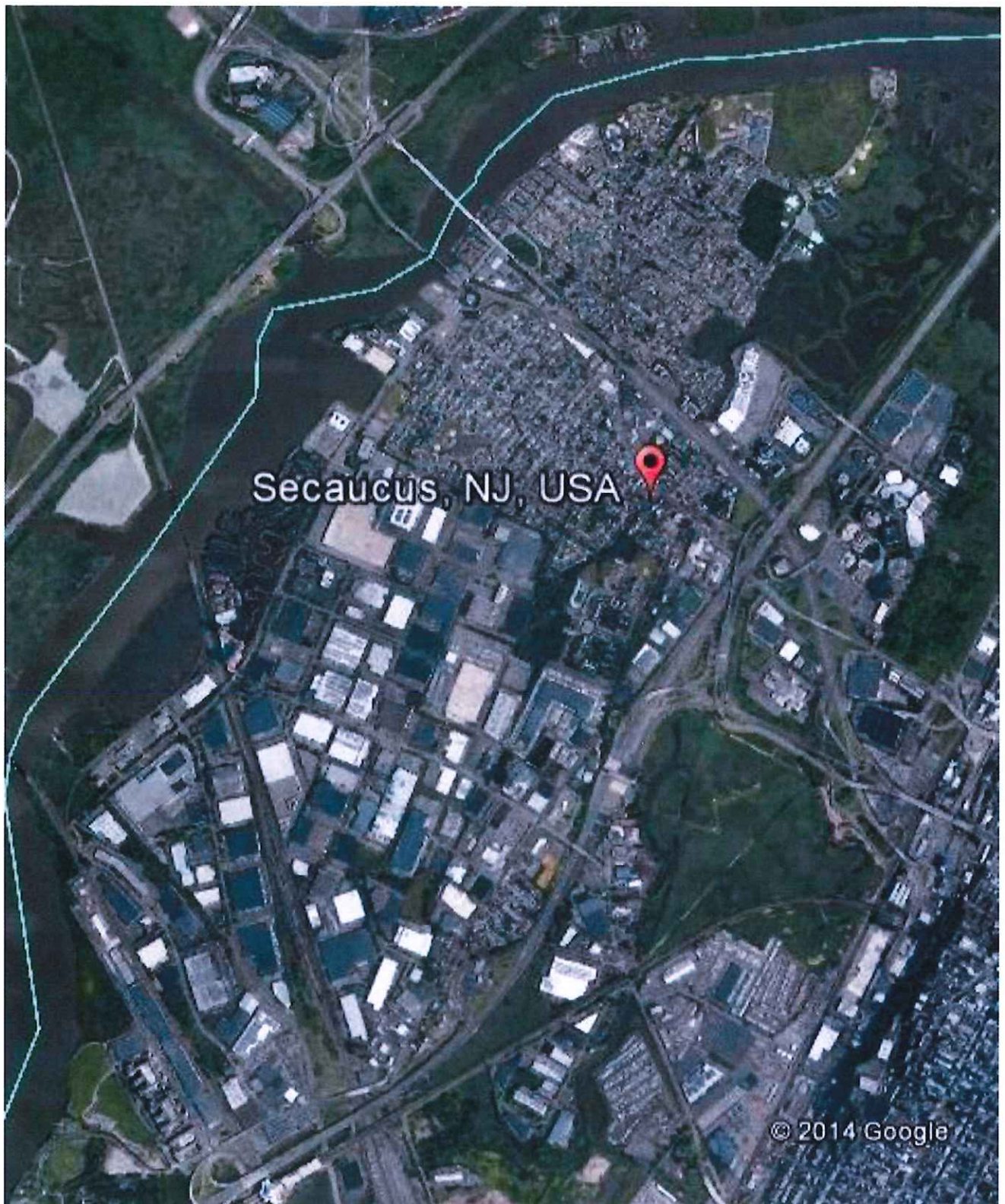
Organizational Chart

Secaucus Community Forestry Organizational Chart



V. COMMUNITY MAP





VI. TRAINING PLAN

The Training Plan is a vital component of any successful shade tree program, and a requirement of the NJ Shade Tree and Community Forestry Assistance Act. Secaucus is dedicated to maintaining its "Approved Status" under the Act by ensuring that the shade tree program always meets the minimum requirements of having two CORE trained individuals and obtaining a minimum of 8 continuing education unit credits between at least 2 representatives annually.

Several representatives of the Secaucus shade tree program have achieved CORE training, including the required primary contacts of one municipal employee and one community volunteer. Shade Tree Committee volunteers and DPW and Environmental Department employees obtain the required CEUs annually, and will continue to do so throughout this 5-year management period in order to ensure unbroken compliance with the requirements of the Act.

Representatives of the Secaucus shade tree program have recognized that CORE training provides a good entry level introduction for all new individuals representing not only the Shade Tree Committee, but the DPW and the Environmental Department as well, and has utilized CORE in this respect. In addition, it is recognized that representatives from the Department of Health and volunteers from the Environmental Committee and the Planning and Zoning Boards may also benefit from CORE training. Secaucus will look to send at least one individual to CORE training in every year of this plan. Additionally, the NJ Shade Tree Federation Annual Conference in October is a great place to obtain all the CEUs needed for the year. As in the past, Secaucus plans to utilize this annual conference to obtain the necessary CEUs and remain in compliance with the requirements of the NJ Shade Tree and Community Forestry Assistance Act.

The science of community forestry and arboriculture is constantly changing, and new threats to the health of the state's urban and community trees are being identified all the time. The emerald ash borer has recently been confirmed in our state, adding to the insect and disease concerns that must be addressed and planned for. In addition, weather related events affecting our trees and forests seem to be occurring more and more frequently. Training is critical to keeping up to date with these changes and potential threats, and the latest means for addressing them.

As stated above, training is key to updating and renewing the skills of both full time employees and volunteers to the shade tree program. It is important that the Town provides its Public Works crews with the most updated philosophies regarding proper tree care. For this reason, a greater focus over the next five years will be placed on training those employees who work most closely with the Town's tree resource. Proper selection, planting, and care of young and newly planted trees will reduce the need for action and associated costs for these trees as they mature. Proper tree pruning is needed for the health of the tree resource and the safety of Town employees and residents. Understanding the industry standards of tree planting and tree maintenance will assist the Town in writing and enforcing specifications for its contracted

work. The staff of the Department of Public Works, and Committee volunteers and others responsible for inspections and enforcement, should receive additional training over the next five years on topics such as:

- Hazard tree identification, assessment and management
- Proper tree pruning and removal techniques
- Tree selection and planting
- Tree species identification
- Young tree developmental pruning
- Correction of root collar disorders
- *i-Tree* inventory software for tree benefits and storm preparedness
- Identification and management of Emerald Ash Borer
- Electrical Hazard, Chainsaw, and Chipper safety
- Bucket truck operations (if one is obtained)

The Shade Tree Committee has expressed interest in learning and understanding more about the scientific and social aspects of planting trees in an urban environment. Although Secaucus is a suburban community, it is within the most densely populated part of the state and as a community, has a great many “urban environmental” issues to address. The topic of planting and managing trees in an urban environment could encompass many subjects of interest to the Shade Tree Committee. Urban tree planting, urban soils, urban tree selection, and interactions between people and trees are just a few of the subjects that could be explored. Both Rutgers University and the New Jersey Shade Tree Federation have recently express an interest in expanding continuing educational units into this topic area. Opportunities to obtain this training over the course of this management period will be taken advantage of as they become available.

Additionally, because tree planting was a primary focus for Secaucus throughout the last management plan, and continues as the highest priority for this management period, an emphasis should be placed on young tree maintenance. Training in topics such as young tree developmental pruning and correction of root collar disorders are considered a priority for this 5-year plan.

VII. PUBLIC EDUCATION, AWARENESS, AND OUTREACH

Public outreach activities have been an important part of the Secaucus shade tree program over the past five years, and have centered on a truly comprehensive Arbor Day program that involves the entire Town in the celebration of trees. In Secaucus, planning for Arbor Day begins at the Shade Tree Committee's first meeting in January. Arbor Day programming begins on April 1st, when Committee members begin working with the schools. The Shade Tree Committee visits each school in Secaucus to provide them with the theme for the poster contest, the projects for the older students, and the overall theme and outline for the Arbor Day ceremony. They donate a book about trees to each school library and the public library, and decorate the display case at the public library to reflect the Arbor Day theme. The teachers at all Secaucus schools work with their students to discuss the year's Arbor Day theme, provide time for the Poster Contest, prepare the older students for their Arbor Day projects, and review and prepare for the outline of events prepared by the Shade Tree Committee. The Shade Tree Committee coordinates between the schools, the Mayor and Council, other committees, departments, and corporate sponsors to ensure that the event runs smoothly.

Students in grades K-3 at the Clarendon and Huber Schools participate in the Arbor Day Poster Contest. All participants receive a prize, and the winners are given \$25.00 gift certificates donated by the local *Sports Authority*. Middle School students participate in a variety of environmental projects associated with the Arbor Day celebration, and students from the High School Environmental Club complete the Arbor Day tree plantings. Seedlings from the State nursery are given out to all participants and are distributed either at the ceremony or through the schools. The Arbor Day Program includes readings and musical performances by the students, presentation of the Town's Tree City USA awards, presentations of the Arbor Day Poster Contest winners, the Arbor Day Proclamation, and tree plantings. Both print and television media are invited and routinely provide extensive coverage of the annual Arbor Day celebration.

Any materials left over from Arbor Day are distributed at the Secaucus Green Fest, which is held the following week. The Shade Tree Committee hosts a booth at the Green Fest each year to distribute information about trees and the Secaucus shade tree program, and free seedlings for residents to plant. The theme of the booth changes each year to correspond with the Arbor Day theme, but the message always reflects the benefits that trees provide to the community.

In 2014 Secaucus celebrated its 21st year as a Tree City USA, having participated in the program every year since 1993. In addition, the Town has received several Tree City USA Growth Awards. Secaucus is proud of this long history of achievement, and displays the Tree City USA emblem throughout the Town. Participation in the Tree City USA program through the National Arbor Day Foundation will continue to be an important Every Year Event for the Secaucus shade tree program throughout this management period.

In 1994, Secaucus received the Green Communities Achievement Award from the NJ Community Forestry Council for its establishment and implementation of a successful

municipal tree program. This award winning program continues to evolve and achieve, and is well supported by the Mayor and Council. Public outreach is a critical component of any successful shade tree program, as it is in Secaucus, and must continue to evolve and achieve with the rest of the shade tree program activities. Specifically, the Shade Tree Committee has realized that while there is an excellent program in place for promoting trees to the children of Secaucus, they need to improve their communication with the adult residents of the Town. Increasing the public's awareness and appreciation for trees, in order to reduce resistance against tree planting and improve the care of the existing trees, is one of the highest priorities of this five-year management period. As such, several of the goals and objectives for this plan involve public education, awareness, and outreach.

2014-2018 Goals and Objectives:

Public education, awareness, and outreach goals for this management period are focused to the overall goal of increasing tree planting throughout Secaucus. To successfully achieve this, the shade tree program recognizes that they will need to reduce the resistance to tree plantings from the residents. Several of the long term goals of this management period are aimed at helping Secaucus residents and businesses to appreciate the value and benefits of community trees. As such, the goals and objectives for public education, awareness, and outreach are intertwined with the goals for improving and expanding tree planting programs.

These include plans to update and improve enforcement of the "Tree Conservation Ordinance", updating the "Approved Species" tree planting list, and creating formal Tree Planting Specifications, as all of these will help to improve the shade tree program in Secaucus. All improvements will be advertised and promoted to the residents.

Goals and objectives more specifically targeted to public education and outreach will include the use of the Environmental Department website as a place to post tree related announcements and information. Reports generated by the *i-Tree* inventory software program explaining the benefits that Secaucus' trees are providing will be posted along with corresponding articles. Arbor Day themes will be tailored to correspond with shade tree program accomplishments, and advertised on the website as well as in print media and at the local library. Residents will be encouraged to contact the Shade Tree Committee with tree planting questions and requests. All these items will be compiled into an updated New Resident Welcome Package that will be distributed to new residents of Secaucus to inform and promote the shade tree program.

Color fact sheets highlighting the qualities of the trees selected for the "Approved Species" list will be developed, posted on the website, and printed for use in door to door contact to promote tree plantings in both the residential neighborhoods and the business districts in Town.

In addition, the Shade Tree Committee will develop incentive programs to help alleviate the burden of tree care for the residents. This may involve expansion of the existing sidewalk replacement program and/or the Town's maintenance responsibilities. Grant opportunities will be explored to help fund these incentive programs for the benefit of the tree resource and to alleviate homeowner concerns.

The implementation plans for all of these programs are described in detail within the Plan Implementation section, and strategically organized along the timeline. It is believed that these efforts will garner public support for increased tree planting throughout Secaucus.

VIII. STATEMENT OF TREE BUDGET

The Town of Secaucus has supported its tree care work with budgeted funds. This support for maintaining a forested environment has provided residents of Secaucus an improved quality of life as hundreds of tree have been planted and an equal number of trees have been maintained and improved. The budgeted funds sustain a very activate community forestry program and have done so for many years. The Town of Secaucus has a long list of every year activities that are supported by its community forestry budget. Both the Department of Public Works and the Shade Tree Committee will utilize these funds to carry out the goals and objects found within this plan. The budget for trees in Secaucus is just under two hundred thousand dollars. This amount of support qualifies the Town under the Tree City USA requirement of two dollars per capita, with its population being around 18,000 residents.

The budget for Secaucus' shade tree program is distributed among several categories of work, including tree pruning, tree purchasing and planting, the Town's chipper program, leaf/woodchip/log disposal, contracted tree maintenance and hazard tree removal, staffing, and an outstanding Arbor Day outreach program. This comprehensive program has resulted in the safe and healthy condition of the municipal trees, hundreds of newly planted trees, and the consistent removal of hazardous trees.

The Shade Tree Committee has the support of the municipal government, and can throughout the year make direct request to the Mayor and Council for funding associated with the shade tree program. This unique arrangement permits the Shade Tree Committee the opportunity to achieve projects such their annual Arbor Day event, outreach to schools and Town residents, and participation in the Town Green Fest, as well as obtain the required training, with fiscal simplicity.

This support is rewarded through the in-kind funds obtained through volunteer hours from the involvement of the Shade Tree Committee and other civic groups which amount to over \$23,000.00 each year based on their hours served and the federal volunteer rate.

Trees and tree planting contributions for public lands in Secaucus are also obtained yearly from corporate support such as donations from Home Depot and the local hospital, and grants from the Meadowlands Commission, the county of Hudson, and the NJ Department of Transportation.

This Community Forestry Management Plan contains the vision for the next five years of tree activities in Secaucus. The activities and accomplishments planned for will require additional financial support. Funding at the municipal level is getting harder to come by, and while the members of the shade tree program are confident that their existing budget will continue to be supported, they realize that some of the specific, essential objectives of this plan will require outside sources of funding. As such, obtaining grant money to support some of the plan's initiatives will be important to the success of this plan.

Town of Secaucus 2013 Tree Budget Summary

Tree Trimming

2 men @ 28.20/hr x2 days/month \$10,829

Tree Planting

200 man hours @\$27.10/hr \$3,948

Chipper Program

2 men @\$28.20/hr x 1 day/week (52 weeks) \$23,462

Sidewalk Safety Program

Concrete – 9 residences \$5,057

Labor - \$400/residence \$3,600

Leaf/Woodchip/Log Disposal

Allegro \$20,993

Tree Purchase/Installation

Andy Matt Tree Service -188 trees \$35,931

- water bags, tree stakes, mulch

Tree/Plant Maintenance

Matera Nursery \$21,931

Plainview Growers \$10,068

Terre Company \$4,111

Hazardous Tree Removal

RMM Tree Service \$5,550

Equipment and Parts

Northeastern Arborist \$2,105

Tree Conservation Officer/Staff

\$21,000

Subtotal

\$167,914

STC & other volunteer hours

\$23,000

Federal rate of \$22.55/hour

Arbor Day/Training/ support

\$7,786

GRAND TOTAL

\$198,700

IX. STATEMENT OF PLAN IMPLEMENTATION

This section provides the organization of all of the goals and objectives stated and described throughout the plan into specific action items prioritized over the five year timeline of this Community Forestry Management Plan. The four basic elements of a plan (Tree Inventory and Assessment, Hazard Tree Identification and Management, Tree Planting, and Tree Maintenance) are all addressed and planned for on the timeline below.

This section will also contain a plan for the organization of the Secaucus shade tree program to ensure that each action item is assigned to the appropriate department or volunteer group. This is intended to help move plan implementation forward and maintain progress toward short and long term goals.

The Secaucus Shade Tree Committee, Environmental Department, and Department of Public Works will continue to participate in the following list of Every Year Events throughout the course of this five-year management period. Some of the every year events will be expanded or adjusted according to the Long Term Goals of the Plan.

In addition to the Every Year Events, the Secaucus shade tree program has identified Long Term Goals for this management period, which are detailed along a timeline as follows. Due to the timing of this plan's submission and the desire to maintain unbroken Approved Status under the NJ Shade Tree & Community Forestry Assistance Act, it is necessary to include 2014 as the first year in this 5-year planning cycle. Because the plan will be submitted for State Approval toward the end of 2014, "Year One" will include Goals and Objectives already underway, and a sixth year will be added to the timeline in order to accommodate overlap between this and the next 5-year planning cycle.

Every Year Events

- Conduct monthly Shade Tree Committee meetings (summers off)
- Develop Annual Budget & Spending Plan
- Identify & Distribute Annual Task Responsibilities
- Celebrate Arbor Day with all Secaucus schools
- Participate in the Secaucus Green Fest
- Support & Promote the Chipper Program through the DPW
- Support & Promote the Sidewalk Safety Program through the DPW
- Support & Promote Tree Planting and Pruning completed by the DPW
- Support & Promote contracted tree work including tree planting, pruning, recycling, and hazard tree removal organized and made possible by the DPW
- Continue to seek out grants and donations to boost tree planting efforts in Secaucus
- Complete and Submit the annual Tree City USA Application
- Support & Promote the development of the "Annual Report of Previous Year's Work" detailing the planting, removing and maintaining of trees by the DPW

- Complete and Submit the Annual Accomplishment Report to the NJ Forest Service and the Secaucus Mayor and Council
- Maintain Approved Status under the NJ Shade Tree & Community Forestry Assistance Act, including an annual training program

Basic Elements

(Tree Inventory / Assessment, Hazard Tree Identification, Tree Planting, Tree Maintenance)

Tree inventory and assessment goals are already underway thanks to a grant from Sustainable Jersey to carry out a street tree inventory, determine tree cover goals, identify maintenance needs, and generate benefit reports utilizing *i-Tree* inventory software. The findings of the inventory and assessment will be used to inform decisions regarding tree planting locations, species selection, tree pruning and removal prioritization, and training needs throughout this 5-year management period.

Hazard Tree Identification will also be addressed through the inventory. The inventory is being conducted by in-house staff from the Environmental Department and the Department of Public Works. Trees that are identified as hazardous will be added to a list for priority maintenance or removal. Trees that the inventory team thinks might be hazardous but are unsure of will be collected into a list and given to a Certified Tree Expert for evaluation and recommendations through the provisions of the Sustainable Jersey grant. The shade tree program will also consider the possibility of using this as a training opportunity for the Environmental Department, the Department of Public Works, and the Shade Tree Committee. If possible, these groups could accompany the Certified Tree Expert as the list of potential hazards is evaluated for training in hazard tree identification and assessment. In addition to the inventory, hazardous trees are also identified throughout the year by the Administrator of Tree Conservation, the DPW Tree Crew, the Shade Tree Committee members, and other Town employees during the course of their daily routines. All identified hazards are addressed as appropriate depending on the degree of hazard potential.

As discussed throughout the plan, Tree Planting is the primary goal of this 5-year management period. The Shade Tree Committee is concerned with the number of trees that have been lost to redevelopment of older homes, and the residents' resistance to new tree plantings. Their goal is to replant to increase stocking in the residential part of Secaucus. In addition, the Mayor of Secaucus has expressed a goal to expand tree planting efforts into the business district to improve overall canopy cover and to improve the aesthetics of the business district in Secaucus. The Shade Tree Committee will also address this goal once some momentum is gained in the residential neighborhoods.

Secaucus utilizes every opportunity to plant more trees. They have a dedicated annual budget for tree planting, and in addition are constantly working to obtain grants and donations to allow for the planting of additional trees. Recently, trees have been granted or donated by the State of NJ, the Meadowlands Commission, the Home Depot, and the local hospital. Tree plantings are planned strategically along main thoroughfares and also distributed evenly throughout the

Town's three residential wards. In addition trees are routinely planted in Schmidt's Woods, the Town's largest open space parkland. In spite of past accomplishments, the shade tree program feels strongly that still more needs to be done.

The shade tree program recognizes that progress with their tree planting goals will be difficult without the support of the residents, and that public education and outreach will be an essential component of their tree planting goals over the next five years. Initiatives aimed at increasing the public's understanding and appreciation for the value of trees will be developed and implemented along with tree planting plans. In addition, the Shade Tree Committee has identified several reasons why the public opinion has turned against tree plantings. These include raised and cracked sidewalks, raking leaves, the expense of maintenance as trees get bigger, and root intrusion into clay sewer pipes. The Committee will consider ideas for incentives that the Town may be able to offer homeowners to offset some of these negative aspects of municipal trees as part of the public outreach campaign. These incentive programs may likely be the focus of CSIP grant applications during this 5-year management period.

In addition, the Shade Tree Committee will work with the Administrator of Tree Conservation to develop tree planting specifications and all involved parties will attend training in tree species selection and proper planting techniques. This will help to ensure that all planting efforts are properly implemented, and that those responsible for inspecting contractor plantings will be properly equipped with a document to hold contractors accountable to and the training to know what to look for.

Tree Maintenance is an ongoing process for the Department of Public Works. The department maintains a two person tree crew that is dedicated to tree maintenance two days each month. At this time, the DPW does not possess a bucket truck, so all tree maintenance work conducted in house is limited to about fifteen feet in height. The department has an annual budget for tree pruning and removal of trees too large to be maintained by the in-house crew. The in-house crew will benefit from training in young tree developmental pruning, including branch elevation, which can be completed on the Town's trees before they become too tall for the in-house crew. Proper developmental pruning on these young trees will improve tree health and structural stability, and help to prevent costly tree pruning needs and structural failures as the trees mature. In addition, tree maintenance crews will benefit from training in correction of root collar problems, such as deep planting and girdling roots, as these are evident in some of the new plantings and can also be completed from the ground. If the Town purchases a bucket truck, the DPW crews will also require training in large tree pruning and removal, and safety.

Secaucus used to implement a "Block Pruning Program" in which entire blocks would be pruned at one time on a rotational basis. In recent years, however, with the shift of program focus and the loss of the DPW's bucket truck, the rotational tree pruning program is no longer in place. While tree planting is the main focus of this 5-year management period, it is believed that once tree cover goals have been identified and significant progress has been made toward attaining them, the focus can once again shift to a structured maintenance program. In looking to the future, the Shade Tree Committee would like to see the reestablishment and refining of the block pruning program as a central goal of the Town's 4th 5-year Community Forestry Management Plan.

Long Term Goals

Year 1 (2014)

Tree Conservation Ordinance

- Update the "Tree Conservation" ordinance originally established in 1993 to include more strict penalties for tree removal violations and to include a permitting fee to fund replacement tree plantings.
- Draft the ordinance in cooperation with the Administrator of Tree Conservation and the Mayor and Council through the participation of the DPW and Town Council representatives at the Shade Tree Committee meetings.
- Present the ordinance for review and vote.
- Begin outreach and enforcement as soon as the ordinance is passed.

Street Tree Inventory

- In accordance with a grant from Sustainable Jersey, complete an inventory of street trees in Secaucus with the goals of identifying a list of all high priority hazards and creating a long-term tree cover goal for the Town.
- Complete the inventory using in-house staff from the Environmental Department and the Department of Public Works.
- In accordance with the grant agreement, hire a consultant to help with the hazard tree assessments and recommendations, either in the form of training for the in-house staff and volunteers, or as follow up to the in-house inventory.
- Once inventory data is collected, enter the data into the *i-Tree Streets* inventory software program and use it to generate reports detailing the benefits that the street tree resource provides.
- Use these reports to illustrate the benefits of trees to the Mayor and Council and the Town residents in support of shade tree program budgets and Town-wide tree planting initiatives.
- Use the data collected to develop tree cover goals.
- Use tree species composition reports generated by the *i-Tree* inventory software program and vacant planting locations identified during inventory collection to inform future tree planting decisions.
- Use tree health and species composition information gathered from the inventory to develop a revised list of recommended trees to plant in Secaucus.
- Set long term species diversity goals to insure that no one species comprises more than 10% of the total tree population, no single genus more than 20%, to buffer against catastrophic tree failure or infestation.

Develop Municipal Tree Cover Goal

- Utilize the technical resources for determining tree cover on the Sustainable Jersey website (www.sustainablejersey.com) to identify the current percentage tree cover in Secaucus.
- Review the findings of percentage of current tree cover along with the vacant planting locations identified by the street tree inventory and use these to develop a goal to increase municipal tree cover over a specified time period.

- Consider the varied land use patterns throughout Secaucus to separate the overall tree cover goal into individualized goals for the different sections of Secaucus, and use these to prioritize tree plantings.
- Adopt a Municipal Tree Cover Goal(s) for Secaucus at a formal meeting of the Shade Tree Committee.
- Use this Municipal Tree Cover Goal to apply for future Sustainable Jersey grants.

Prioritize and Budget for addressing Identified Hazards

- Prioritize the maintenance needs identified by the hazard tree assessment portion of the street tree inventory conducted under the Sustainable Jersey grant.
- Determine whether the work can be completed in house, or whether contractors will need to be hired in order to complete the work within a reasonable timeframe.
- Work with the Mayor and Council to find any additional funding needed and complete all hazard tree work.

Community Forestry Management Plan

- Utilize the Green Communities Challenge Grant awarded to the Town to hire a consultant to work with the Shade Tree Committee, the Environmental Department, and the Department of Public Works to develop the Town's third 5-year Community Forestry Management Plan.
- Ensure that plan development and approval is completed before the end of 2014 in order to maintain Approved Status under the New Jersey Shade Tree and Community Forestry Assistance Act without interruption.
- Continue the seamless implementation of the goals and objectives of the Secaucus shade tree program as outlined in this plan.

Training

- Provide CORE training for any new members of the Secaucus Shade Tree Committee, and consider sending a member of the Environmental Committee to CORE training to get a better understanding of the role of the Shade Tree Committee and therefore strengthen the partnership between the two groups.
- Provide Chainsaw Safety Training for Department of Public Works employees.
- Provide training in the use of the *i-Tree* Inventory Software Suite for the Environmental Department and interested members of the Shade Tree Committee and/or the Department of Public Works.
- Provide training in Hazard Tree Assessment and Management for Environmental Department and Public Works Department Staff and Shade Tree Committee volunteers as provided for through the Sustainable Jersey grant. This training should be tailored specifically to the findings of the Street Tree Inventory.

Administrative Organization

- Assign specific goals and objectives to the appropriate departments or committees within the Secaucus shade tree program to avoid confusion and insure consistent progress toward the goals and objectives of this management period.
- Include Every Year Events as well as the Long Term Goals for each year.

Goal / Task	Assigned To:	Completed
Tree Conservation Ordinance		
Street Tree Inventory		
Municipal Tree Cover Goal		
Address all identified hazards		
Community Forestry Management Plan		

Year 2 (2015)

Tree Conservation Ordinance – Compliance, Enforcement, and Monitoring

- Designate the person/department in charge of monitoring and enforcing compliance with the ordinance and develop a plan for communication between this person/department and the other departments and committees involved in the shade tree program.
- Promote the ordinance in a positive light to make the residents of Secaucus aware of the new requirements / changes.
- Highlight the value of the new ordinance in terms of the benefits that tree lined streets provide to the residents of Secaucus using the *i-Tree* reports generated from the Street Tree Inventory.
- Document the number of trees evaluated and ultimately preserved under the ordinance.

Update “Approved Species” Tree Planting List

- Begin researching new trees to be included on the “Approved Species” list used for tree planting in Secaucus.
- Utilize information gathered in the Street Tree Inventory to select species that will increase diversity and improve overall species composition in Secaucus.
- Remove species that have proven to be problematic or show poor survival in Secaucus.
- Focus on identifying trees that are urban tolerant, salt tolerant, and flood tolerant.
- Discuss selections with all involved departments and committees.
- Agree and adopt an updated “Approved Species” Tree Planting List for Secaucus and utilize this list for all future plantings.
- Plan to revisit and update the list as necessary during the next five-year planning period.

Develop Tree Planting Specifications

- Use the American Standard for Nursery Stock and the ANSI Z60.1 Standards to develop official Tree Purchase and Planting Specifications for Secaucus.
- Develop these specifications with the goals of selecting the right species for the right location, and getting trees planted at the correct planting depth, in mind.
- Monitor tree plantings for adherence to specifications.
- Ensure that all tree plantings under utility lines are of approved, utility friendly species.

- Distribute the Tree Planting Specifications to all tree planting contractors used in Secaucus, and review with in-house tree planting and compliance staff.

Street Island Recommendations / Remediation

- Identify any patterns in the tree damage caused by road salt due to the uncommonly harsh winter of 2014 along the Front Street Islands and in other street island locations.
- Conduct a soil test including salt analysis of representative islands (one for islands with severe tree damage, one for moderate tree damage, and one for minimal tree damage) and compare the results.
- Develop a soil remediation plan based on soil test results and recommendations from the soil testing facility.
- Develop a tree replacement plan based on the known soil conditions and anticipating the need for salt tolerant species.

Tree Acceptance Incentive Program

- Discuss possible incentives that could be offered to residents to alleviate the resistance to tree plantings.
- Ideas under consideration include assistance in maintaining larger trees by providing the chipper, clarifying and perhaps increasing the Town's role in maintaining curbside trees, increasing the Town's responsibility for sidewalk repair, and planting trees on the resident's side of the sidewalk where the curb lawn is too small to adequately support a tree.
- Determine the most reasonable possibilities and discuss a plan for implementation with the DPW, the Mayor and Council, and other involved parties.
- Utilize the NJ Shade Tree Federation publication "Trees for NJ Streets" to ensure the planting of "sidewalk friendly" trees at the time of slab replacement through the existing sidewalk slab incentive program.
- Apply for CSIP and any other appropriate grant programs to help fund these new initiatives.
- Advertise the new initiatives through the Environmental Department website and at Arbor Day and the Green Fest.

Training

- Provide CORE training for any new members of the Secaucus Shade Tree Committee, or any members of the Secaucus shade tree program, as appropriate.
- Provide training in Emerald Ash Borer identification and management for all members of the Shade Tree Committee, Public Works Department, and Environmental Department.
- Provide training in Tree Species Selection for Urban Environments for members of the Shade Tree Committee.
- Provide training in proper tree planting for in-house tree planting crews and for enforcement personnel from the Building Department, Health Department, and Zoning Department who may be responsible for inspection of contracted tree plantings.

Administrative Organization

- Assign specific goals and objectives to the appropriate departments or committees within the Secaucus shade tree program to avoid confusion and insure consistent progress toward the goals and objectives of this management period.
- Include Every Year Events as well as the Long Term Goals for each year.

Goal / Task	Assigned To:	Completed
Ordinance Compliance, Enforcement, and Monitoring		
“Approved Species” Tree Planting List		
Tree Planting Specifications		
Street Island Recommendations / Remediation		
Tree Acceptance Incentive Plan		

Year 3 (2016)

Public Relations / Tree Planting Campaign

- Begin a town-wide public relations campaign to promote the benefits of trees and to gain support for increased tree planting and improved residential tree care throughout Secaucus.
- Write an article explaining the many benefits of trees specific to Secaucus using data from the reports generated by *i-Tree* based on the 2014 Street Tree Inventory, and submit the article to local print media for publication.
- Post the article and related charts and graphs from *i-Tree* on the Environmental Department page of the Secaucus website. Include links to other websites with additional information on the benefits of trees (such as the Arbor Day Foundation, the NJ Shade Tree Federation, NJ State Forestry Services, etc.)
- Include contact information for the Secaucus Shade Tree Committee, Environmental Department, and Administrator of Tree Conservation on the website, and post a form and/or directions for requesting that a tree be planted at a residential location.
- Post the updated Tree Conservation Ordinance, the newly developed Tree Planting Specifications, and the revised “Approved Species” Tree Planting List at the same location on the website, so residents will become aware of where to go for tree information in Secaucus.
- Consider using the benefits of trees as the theme for this year’s Arbor Day celebration to reinforce the public relations campaign and tie it into the tree planting campaign.
- Utilize any tree planting requests generated from this year’s Public Relations Campaign for the current year tree planting efforts, to show interest and quick response from the shade tree program.
- Research CSIP and other tree planting grant opportunities and begin preparing grant applications for additional tree planting money.

Street Island Recommendations / Remediation

- Complete the soil remediation plans developed during year 2 to improve soil conditions in affected street islands.
- Complete replacement plantings using appropriate, salt and urban tolerant tree species from the updated “Approved Species” Tree Planting List.
- Publicize the remediation plantings on the Environmental Department website, at Arbor Day, and at the Secaucus Green Fest highlighting the scientific methods used to improve the soil and the careful tree selection promoting the right tree for the right place to show how the Secaucus shade tree program is constantly moving forward and making improvements in the maintenance of the town’s tree resource.

Emerald Ash Borer Identification and Mitigation Plan

- Use the data collected during the Street Tree Inventory and local knowledge of the members of the shade tree program to identify the location and extent of publicly and privately owned Ash trees in Secaucus. Of specific concern are the ash trees on the property of the apartments on Paterson Plank Road.
- Inspect trees for any signs of EAB infestation and if so determine the extent.
- Decide if the Town wants to invest in annual preventive treatment of high valued ash trees, and if so develop a plan to contract with a local tree expert company to begin scheduled treatment.
- If not, begin to develop plans for long term removal and replacement of the ash component of the street tree resource if the EAB spreads to Secaucus.
- Include information on EAB identification and treatment options on the Environmental Department website. Stress the importance of using firewood locally to prevent the spread of this and other exotic pests.
- Consider using Forest Health as the theme for this year’s Arbor Day celebration.
- Utilize the same identification and remediation strategy to address other potential risks to the community forest identified over the course of this management period.

Training

- Provide CORE training for any new members of the Secaucus Shade Tree Committee, or any members of the Secaucus shade tree program, as appropriate.
- Provide training in the Social Aspect of Tree Planting in Urban Environments for members of the Shade Tree Committee and the Environmental Department.
- Provide training in Young Tree Developmental Pruning for the Administrator of Tree Conservation and Department of Public Works tree crews.

Administrative Organization

- Assign specific goals and objectives to the appropriate departments or committees within the Secaucus shade tree program to avoid confusion and insure consistent progress toward the goals and objectives of this management period.
- Include Every Year Events as well as the Long Term Goals for each year.

Goal / Task	Assigned To:	Completed
Public Relations / Tree Planting Campaign		
Street Island Recommendations / Remediation		
Emerald Ash Borer Identification & Mitigation		

Year 4 (2017)

Public Relations / Tree Planting Campaign

- Design identification badges for Shade Tree Committee members and get them printed and distributed in preparation for the next portion of the tree planting campaign.
- Develop color fact sheets (or select already existing color fact sheets) for each of the trees selected for the updated “Approved Species” Tree Planting List and print them to make tree selection packets for residents and business owners. Post these on the Environmental Department website as well.
- Develop as part of this packet some pictures of tree lined streets and then streets without trees to illustrate how a residential or business district block looks with and without trees. Do this with trees of different species and sizes, and in different seasons, to help with tree selection.
- Begin the expansion of the tree planting program into the business district.
- Go door to door to identify possible corporate partners in the business district and discuss partnering to expand the tree planting program, highlighting the benefits that a large scale tree planting can provide.
- Utilize the color fact sheets of the approved tree species, and the *i-Tree* reports for the residential section of Town to demonstrate that trees are worthy of investment and provide numerous benefits in the long run.
- Explore the possibility of working with local banks to help fund tree plantings in the business district.
- Apply for appropriate grants and forge corporate partnerships to expand the tree planting program.

New Resident Welcome Packet

- Update resident packet of important tree related information to distribute to new residents of Secaucus.
- Include copies of the Tree Conservation Ordinance, the “Approved Species” Tree Planting List, Tree Planting Specifications, the article and reports on the benefits of trees in Secaucus, and the Environmental Department website and important contact information.

- Also include information about the Sidewalk Replacement Program, trees and sewers, an Emerald Ash Borer fact sheet, and any other appropriate information.
- Consider the need to develop the packet in different languages, or to have separate residential and corporate versions.
- Share the information with local real estate agents and begin distribution to new residents of Secaucus.

Improve Communication with Public Service Electric & Gas

- Invite a representative from PSE&G to attend a meeting of the Shade Tree Committee to discuss the Committee's goals for the shade tree resource and the Utility Company's role in the maintenance of trees in Secaucus.
- Ask the PSE&G representative to inform the Committee of any work plans for Secaucus well in advance of the work crews' arrival, and ask to meet to discuss what is expected from both parties.
- Explore the possibility of a utility tree planting replacement program.
- Initiate an annual meeting with the Utility representative.

Training

- Provide CORE training for any new members of the Secaucus Shade Tree Committee, or any members of the Secaucus shade tree program, as appropriate.
- Provide training in tree identification for members of the Shade Tree Committee and any interested employees from the Environmental Department and Department of Public Works in order to improve the knowledge and confidence of all representatives of the shade tree program.
- Provide training in root collar excavations and root pruning for the Department of Public Works tree crew.

Administrative Organization

- Assign specific goals and objectives to the appropriate departments or committees within the Secaucus shade tree program to avoid confusion and insure consistent progress toward the goals and objectives of this management period.
- Include Every Year Events as well as the Long Term Goals for each year.

Goal / Task	Assigned To:	Completed
Public Relations / Tree Planting Campaign		
New Resident Welcome Packet		
Improve Communication with PSE&G		

Year 5 (2018)

Public Relations / Tree Planting Campaign

- Move forward with any plans and partnerships developed in the business district of Secaucus.
- Continue outreach throughout this section of town to further expand the tree planting opportunities as businesses that may have initially turned you down see the plantings happening on other properties.
- Use the *i-Tree Design* application to project the future benefits that the newly planted trees will contribute at the business district locations as they grow and mature.
- Continue tree planting efforts in the residential wards in addition to the large-scale tree planting initiatives in the business district.
- Publicize the tree planting projects underway on the Environmental Department website and in local print and television media.
- Consider using Secaucus' Growing Tree Canopy as the theme for this year's Arbor Day Celebration, and invite corporate partners to participate in the ceremony.

Storm Preparation

- Use the *i-Tree Storm* utility to develop a pre-storm assessment of potential storm damage should Secaucus be affected by another storm such as Hurricane Sandy.
- Store the report in several locations along with materials for a post storm assessment in order to quickly prepare the post storm report to submit to FEMA for emergency funding.
- Submit a copy of the pre-storm assessment to NJ State Forestry Services as a backup and for their use in compiling a statewide storm preparedness report.

Green Communities Grant Application and Development of 4th 5-year Plan

- Submit a Green Communities Grant application to fund the development of the next Community Forestry Management Plan
- Hire a consultant and begin development of the next 5-year Community Forestry Management Plan.

Training

- Provide CORE training for any new members of the Secaucus Shade Tree Committee, or any members of the Secaucus shade tree program, as appropriate.
- Provide the DPW tree crew with training in large tree maintenance and removal and bucket truck safety, if appropriate.
- Provide the DPW tree crew with refresher courses in EHAP, Chainsaw Safety, and Chipper Safety.

Administrative Organization

- Assign specific goals and objectives to the appropriate departments or committees within the Secaucus shade tree program to avoid confusion and insure consistent progress toward the goals and objectives of this management period.
- Include Every Year Events as well as the Long Term Goals for each year.

Goal / Task	Assigned To:	Completed
Public Relations / Tree Planting Campaign		
Storm Preparation		
Green Communities Grant Application for 4th CFMP		

Transition Year (2019)

Community Forestry Management Plan

- Work with the hired consultant to complete development of Secaucus' 4th 5-year Community Forestry Management Plan.
- Ensure that the plan is completed and submitted to the NJ Community Forestry Program with enough time to secure seamless Approved Status under the NJ Shade Tree & Community Forestry Assistance Act.
- Begin implementation of the goals and objectives of the 4th 5-year Community Forestry Management Plan for the benefit of the Town of Secaucus and its private and corporate residents.

Scheduled Maintenance Program

- Begin development of a scheduled maintenance program in which the Town is divided into several maintenance sections, with one section pruned each year, so that all trees are pruned at least once every "x" number of years (depending on the number of maintenance sections identified).
- Consider how the "block pruning program" worked, and determine whether that was the best method for managing a scheduled maintenance program, or whether it would be better to organize tree maintenance in a different way.
- Consider the need to prune the Town's mature trees more frequently than the more recently planted trees - specifically in the industrial section of Town.
- Consider planning for the need to hire contracted crews to accomplish some of this scheduled maintenance.

Municipal Master Plan Update and Representation on Meadowlands Commission

- Reach out to the Mayor and Council and the Planning and Zoning Boards to request to be included in the planning process for the next revision of the Municipal Master Plan.
- Attend meetings as necessary and provide information and documentation supporting the Shade Tree Program's roles within the municipal structure.
- Assist with the development of language that will recognize the Community Forestry Management Plan as the governing document for the Shade Tree Program in Secaucus.
- Research municipal representation on the Meadowlands Commission and, if appropriate, petition for the Environmental Department to represent Secaucus.

X. COMMUNITY STEWARDSHIP INCENTIVE PROGRAM

CSIP #1: Training

Training is a critical component in the successful implementation of this plan, and specific training needs are discussed in detail in the training section on pages 15 - 16, and are prioritized along the timeline in the Plan Implementation section on pages 26,28,30,32, and 33.

CSIP #2: Ordinance Establishment

The "Tree Conservation Ordinance" has just been updated during the initial year of this management plan, and plans to announce the changes and improve enforcement are important next steps. The new ordinance is discussed in the Community Overview section on page 10, ordinance establishment and enforcement are also listed among the long term goals in the Introduction section on page 4, and prioritized along the timeline in the Plan Implementation section on pages 25 and 27.

CSIP #3: Public Education & Awareness

Public Education & Awareness of the value and benefits of trees was identified as one of the highest priorities of this management period, and essential to the success of the tree planting campaign. A Public Relations / Tree Planting Campaign is listed as a long term goal of this 5-year management period in the Introduction section on page 5, is described in the Public Education, Awareness, and Outreach section on pages 17, 18 and 19, and is prioritized along the timeline in the Plan Implementation section on pages 29, 31 and 33.

CSIP #4: Arbor Day

Arbor Day celebrations are at the heart of Secaucus' shade tree program, and are held each year with the full involvement of all Secaucus schools. The Arbor Day program is detailed in the Public Education, Awareness, and Outreach section on page 17, and included as an Every Year Event along the timeline in the Plan Implementation section on pages 22 and 29.

CSIP #5: Tree Inventory

A Street Tree Inventory is currently underway for the residential section of Secaucus thanks to a grant from Sustainable Jersey. The inventory is referenced throughout the plan, but discussed in detail in the Plan Implementation section on pages 23 and 25.

CSIP #6: Hazard Tree Assessment

A hazard tree assessment is also currently underway as part of the Street Tree Inventory, and is discussed in the Plan Implementation section on pages 23 and 26.

CSIP #7: Storm Damage Assessment

Secaucus has been severely affected by storms over the last several years, and has planned to complete a pre-storm assessment using the *i-Tree* Storm utility in order to be more prepared. This action item is discussed in the Plan Implementation section on page 33.

CSIP #8: Tree Maintenance & Removal

Tree maintenance and removal is ongoing in Secaucus, and is addressed within the Every Year Events in the Introduction section on page 5, and planned for on the timeline in the Plan Implementation section on pages 22, 24, 26 and 34.

CSIP #9: Insect & Disease Management

This plan does contain a strategy for addressing the possibility of Emerald Ash Borer infestation in Secaucus. Beyond that, insect and disease management will be managed through careful species selection and planting for species diversity. These strategies are discussed in the Introduction section on page 6, in the Training Plan on page 16, and in the Plan Implementation section on page 30.

CSIP #10: Wildfire Protection

There are no specific wildfire protection goals identified within this plan, as it is not considered a priority for this management period. However the possibility of a brush fire in the surrounding meadowlands, and how to prevent it, may be considered for part of the next management period.

CSIP #11: Tree Planting

Tree planting is the primary goal of this 5-year management period. Goals and objectives directed at increasing tree planting can be found in the Introduction section on page 5, in the Community Overview on page 9, in the Training section on pages 15 and 16, the public education and awareness section on pages 17 and 18, and in the Plan Implementation section on pages 27, 29, 31 and 33. Tree planting will likely be the subject of CSIP grant applications, as discussed within the plan.

CSIP #12: Tree Recycling

Tree recycling is completed in Secaucus through the Chipper Program and the Leaf/Wood/Log Disposal contract carried out by the Department of Public Works. These programs are discussed in the Community Overview section on page 8, and make up part of the Every Year Events discussed in the Introduction on page 6 and in Plan Implementation on page 22.

CSIP #13: Sidewalk Maintenance Program

Secaucus has a sidewalk replacement program in place in which the DPW will complete sidewalk replacement work, including careful root pruning, for the cost of \$100.00 per slab. Improvements to this program, and eliminating the backlog, are considered within the Community Overview section on page 8, the Public Education, Awareness, and Outreach section on page 18, and in the Plan Implementation section on page 28. This will likely be the subject of a CSIP grant application, as discussed within the plan.

CSIP #14: Storm Water Management

Secaucus has a high water table, and storm water management is an important concern. Increasing tree cover throughout Secaucus will help to intercept rainfall, increase infiltration rates, and prevent erosion. Tree planting is the primary goal of this management period, and is discussed throughout the plan, and specifically detailed in the Plan Implementation section on pages 27, 29, 31, and 33.

CSIP #15: Other

No "Other" CSIP practices have been identified for this five-year management period.

APPENDICES

- Tree Conservation Ordinance (Chapter 109 of Town Code)
- “Green Zoning” Ordinance (Chapter 135-9.2 of Town Code)
- Sustainable Land Use Pledge

CONSULTANT’S NOTE

This, Secaucus’s third 5-year Community Forestry Management Plan, has been prepared specifically for the Town of Secaucus, in accordance with the Guidelines of the New Jersey Shade Tree & Community Forestry Assistance Act, by Hometown Forests, LLC.

The implementation of this plan is the responsibility of the Town of Secaucus. Hometown Forests, LLC is in no way responsible for carrying out the implementation of any of the components of this plan.

Ch. 109 TREE CONSERVATION

§ 109-1. Title.

§ 109-2. Purpose.

§ 109-3. Authority of Mayor and Council; appointment of Administrator of Tree Conservation.

§ 109-4. Administrator of Tree Conservation.

§ 109-5. Powers and duties: Mayor, Council and Administrator of Tree Conservation.

§ 109-6. Advisory Committee.

§ 109-7. Establishment of rules, regulations, by-laws.

§ 109-8. Appeals.

§ 109-9. Issuance of permits.

§ 109-10. Budget.

§ 109-11. Penalties, jurisdiction of Courts.

[HISTORY: Adopted by the Mayor and Council of the Town of Secaucus 10-12-93 as Ord. No. 93-59. Amendments noted where applicable.]

§ 109-1. Title.

This chapter shall be titled "Tree Conservation".

§ 109-2. Purpose.

The purpose of this chapter is to establish regulation(s) of the planting of shade and ornamental trees and shrubberies now erected or hereafter planted within the Town of Secaucus, which regulations shall include planting, trimming, spraying, caring and protection thereof, the regulation and control of ground surrounding the same, the removal of any tree dangerous to the public safety, and the treatment to and of any tree situated on private property believed to harbor disease or insects.

§ 109-3. Authority of Mayor and Council; appointment of Administrator of Tree Conservation.

A. The Mayor and Council or the Administrator of Tree Conservation in consultation with the Advisory Committee of Tree Conservation shall enforce all provisions hereof.

The Mayor and Council shall appoint an Administrator of Tree Conservation to administer and enforce the provisions hereof, consistent with this chapter. Such appointee shall serve at the pleasure of the Mayor and Council. Such person shall be known as Administrator of Tree Conservation.

§ 109-4. Administrator of Tree Conservation.

The Administrator of Tree Conservation shall enforce and administer the provisions hereof in consultation with the Advisory Committee of Tree Conservation. All matters respecting this chapter shall be addressed to the Administrator of Tree Conservation, and all decisions of the said Administrator shall be in writing, which writing shall disclose the matter of any application or determination by such Administrator stating expressly the recommendation of the Advisory Committee including a synopsis of minutes of the Advisory Committee respecting such matter.

§ 109-5. Powers and duties: Mayor, Council and Administrator of Tree Conservation.

A. Without limiting any other provisions hereof, the Mayor and Council or the Administrator of Tree Conservation in consultation with the Tree Advisory Committee of Conservation shall:

- (1) Exercise full and exclusive control over the regulation, planting, care of shade and ornamental trees, shrubbery and grass now located, or which may hereafter be planted in or upon any public street, park or parkway, except county parks or parkways, including the planting, trimming, spraying, care and protection of the same for the public good, and to regulate and control the use of the ground surrounding the same, so far as may be necessary for their proper growth, care, and protection.
- (2) Require the removal of any tree, or part thereof, dangerous to public safety and to require the replacement of any tree removal with an appropriate species.
- (3) Administer treatment to, or remove, any tree or shrub situated upon private property which is believed to harbor a disease or insects readily communicable to neighboring healthy trees or shrubs in the care of this town and enter upon private property for that purpose, with the consent of the owner thereof, provided the suspect condition is first confirmed by certification issued by or on behalf of the Department of Agriculture.

B. The Mayor and Council or Administrator of Tree Conservation shall be empowered specifically to control and protect shade trees and shrubs, and shall enforce the provisions of this chapter:

- (1) No person shall do, or cause to be done, any of the following acts upon a public highway, public park or other public place within the town without the written permission of the Mayor and Council or the Administrator of Tree Conservation:
 - (a) Cut, trim, break, climb with spikes, disturb the roots of, or otherwise injure, or spray with any injurious chemical, or remove any living tree or shrub, or injure, misuse or remove any structure or device planted to support or protect such trees or shrubs.
 - (b) Plant any tree or shrub.
 - (c) Fasten any rope, wire electric attachment, sign or other device to a tree or shrub or to any guard about such tree or shrub.
 - (d) Close or obstruct any open space provided about the base of a tree or shrub to permit the access of air, water or fertilizer to the roots of such tree or shrub.
 - (e) Pile any building material, or mix any mortar or cement within six feet of a tree or shrub.
- (2) Tree topping. It shall be unlawful for any person to top any street tree. For the purpose of this chapter, "topping" is defined as the severe cutting back of limbs to stubs larger than three (3) inches in diameter within the tree's crown to such a degree so as to remove the normal canopy and disfigure the tree. Trees severely damaged by storms or other causes, or certain trees under utility wires or other obstructions where other pruning practices are impractical, may be exempt from this ordinance at the determination of the Administrator of Tree Conservation.
- (3) Placing of guards. Throughout the period of erection, or repairs of any building or structure, or in the improvement of repairs of a highway, the owner thereof, or the contractor, shall place such guards around all nearby trees on the public highways, as shall effectually prevent injury to such trees.
- (4) Transmission of electric current. All persons including Public Utilities Commission having control over any wire for the transmission of an electric current along a public highway shall at all times guard all trees through which or near which such wires pass against any injury from the wires or from the electric current carried by them. The device or means used shall in every case be subject to approval of the Administrator of Tree Conservation.
- (5) Injurious liquids. No person shall permit any brine, gas, or injurious liquid or solid matter to come in contact with the stem or roots of any tree or shrub upon a public highway.
- (6) Tree maintenance. Property owners of trees extending over a town right-of-way or rubbing against town owned buildings or structures are required to trim, or remove same to the extent necessary to preserve same in a healthy condition or to prevent same from endangering the public welfare, interfering with public travel or traffic sidewalks, streets, highways or the right-of-way. As trees come to mature height, all branches over road must be elevated in a manner to allow

free movement of traffic.

- (a) Whenever it shall become the duty of any such owner of such tree to trim or remove such tree under the requirements of this chapter and the work as directed by the Administrator of Tree Conservation shall not have been done at the expiration of (30) days after personal notice to such owner or thirty-five (35) days after mailing of a notice, postage prepaid, to the post office address of such owners, or satisfactory explanation shall not have been presented for such failure, then the Mayor and Council or the Administrator of Tree Conservation may authorize such work to be performed under their direction and paid for out of the monies of the town to the credit of the Town of Secaucus. The cost of said work shall be certified by the Mayor and Council or their designee to the Secaucus Chief Financial Officer. Upon filing the said certificate, the amount of the cost of such work shall be paid to the town by the property owner.
 - (b) If the Mayor and Council or their designee shall require the removal or remove any such tree as is referred to in this chapter, a replacement tree, approved by the Secaucus Tree Conservation Administrator, must be purchased by the owner, through the Town Tree Planting Program.
- (7) Enforcement.
- (a) The requirements of this chapter shall be enforced by the Mayor and Council or the Administrator of Tree Conservation.
 - (b) The Mayor and Council or Administrator of Tree Conservation may order to be stopped forthwith any tree work or other activity which it or he/she believes is carried on in violation of any provisions of this chapter. The order shall be issued in writing within (24) hours and a copy served upon any person engaged in such tree work or such other activity. If no such person is present upon the property, then the order shall be served upon the owner of the property in question. Thereafter, any further work shall comply with the terms and conditions of any permit issued by the Administrator of Tree Conservation or its designee with respect to such property and the provisions of this chapter.

§ 109-6. Advisory Committee.

- A. The Mayor and Council shall appoint persons to serve, without compensation, on an Advisory Committee called the "Advisory Committee of Tree Conservation" regarding tree conservation to make recommendations to the Mayor and Council or the Administrator of Tree Conservation with respect to any matters within the purview of this chapter. The Advisory Committee of Tree Conservation shall consist of six (6) members excluding the Administrator of Tree Conservation, who shall each serve a term of one (1) year commencing January of each year, except upon the initial appointment of members upon the adoption of this chapter who shall be appointed to serve a term expiring December 31 of the year following the date of appointment.
- B. The Advisory Committee of Tree Conservation shall meet regularly, at least four (4) times per year. Minutes shall be kept at all meetings, and the same shall be made available for review by the public.
- C. Members of the Advisory Committee of Tree Conservation shall each have an equal vote. Only members present at a meeting of the Advisory Committee may vote. The Administrator of Tree Conservation shall chair all meetings and may participate at all meetings, but shall not vote except to break a tie.
- D. Meetings of the Tree Conservation Committee shall be called by the Mayor and Council or the Tree Conservation Administrator or any three (3) members of the Advisory Committee, which meeting shall require three (3) days notice to the Mayor and Council, Administrator of Tree Conservation and the Tree Advisory Committee.

§ 109-7. Establishment of rules, regulations, by-laws.

The Mayor and Council may establish rules and regulations and amend the same, from time to time, as it deems necessary to enforce or effectuate the purpose hereof.

§ 109-8. Appeals.

Any person wishing to appeal any decision of the Administrator of Tree Conservation and/or the Advisory Committee of Tree Conservation may do so by filing such an appeal with the Mayor and Council within thirty (30) days of such written decision of the Tree Conservation Administrator and/or Advisory Committee stating the basis therefor and the relief requested whereupon the Mayor and Council shall conduct a hearing respecting such appeal; the Mayor and Council may affirm, reverse or remand the decision of the Administrator of Tree Conservation or the Advisory Committee.

Any person wishing to appeal any decision of the Mayor and Council shall seek such relief in a court of competent jurisdiction.

§ 109-9. Issuance of permits. [Amended 7-27-10 by Ord. No. 2010-28]

Requests for permits required by the provisions of this chapter for the performance of work should be directed to the Advisory Committee of Tree Conservation regarding Tree Conservation, c/o Superintendent of Public Works, 370 Secaucus Road, Secaucus, New Jersey 07094. A permit to replace a tree will require a two hundred dollar (\$200.) payment to the town to defray the cost of the replacement tree. If a replacement tree dies of natural causes within twelve (12) months of planting, the town will replace that tree at its sole expense.

§ 109-10. Budget.

During the month of December of each year, the Administrator of Tree Conservation and the said Advisory Committee shall provide to the Mayor and Council of the Town of Secaucus a recommended estimated annual budget necessary for the proper operation of this chapter; the Mayor and Council shall annually appropriate such sums as they deem necessary for the proper operation and administration of this chapter.

§ 109-11. Penalties; jurisdiction of Courts.

The Mayor and Council or Administrator of Tree Conservation may prescribe a fine for the violation of any of its rules or regulations adopted pursuant thereto, not to exceed two hundred dollars (\$200.) for each violation, and the Secaucus Municipal Court shall have jurisdiction to act on such violations as the Mayor and Council or Administrator of Tree Conservation shall enact. The Court may impose any such other penalty of up to one thousand dollars (\$1,000.) per violation or penalty as may be provided by law and impose such decision to enforce the provisions and intent of this chapter. Each day that such violation shall continue, shall be deemed to be a separate and distinct offense.

- (b) Directional signs that are freestanding shall not exceed thirty (30) inches in height and may be located at the streetline, provided that such signs do not obscure the vision of motorists.
- (c) Directional signs shall not exceed three (3) square feet in area.
- (7) Directory Signs. Directory signs shall comply with the following requirements:
 - (a) The sign shall be located within the site or complex so as to allow motorists to leave the flow of traffic and safely read the directory; or, shall be placed as a façade sign at the main entrance to a building.
 - (b) The sign may contain a map or floor plan diagram, as the case may be, indicating the location of the buildings or offices listed on the directory.
 - (c) One such sign per main entrance drive or main building entrance shall be permitted.
 - (d) Any such sign shall not exceed twelve (12) square feet in sign area.
 - (e) A freestanding directory sign shall not exceed six (6) feet in height.

§ 135-9.2. Landscaping.

A. General Provisions. The following general provisions shall apply to the installation and design of landscapes:

- (1) All land areas not covered with buildings, parking, or other impervious surfaces shall be landscaped with suitable materials. Landscaping shall consist of trees, shrubs, ground cover, perennials, and annuals singly or in common as well as inanimate materials such as rocks, water, sculpture, art, walls, fences, and paving materials.
- (2) A landscape plan shall be provided as part of site plan submissions and may be required for subdivisions at the discretion of the board of jurisdiction. Every applicant for subdivision or site plan approval shall comply with the minimum standards as set forth in this section.
- (3) For any residential dwelling, there shall be a minimum of 30% of landscaped surface consisting of trees, shrubs, ground cover, perennials, and annuals singly or in common in the front yard. For purposes of

calculation of this percentage, the strip between the sidewalk and the curb shall be included.

- (4) The board of jurisdiction may require landscaping in excess of the minimum requirements in order to create an appropriate landscaping scheme for the development given the existing condition of the site and the proposed project.
- (5) All landscape plants shall be typical in size and weight for their species and shall conform to the standards of the American Association of Nurserymen for quality and installation.
- (6) Plants with pervasive root systems shall not be located where they may cause damage to drainage pipes or other underground utilities and storm water management facilities and should generally be no closer than 10 feet measured horizontally to such utilities.
- (7) All plants shall be tolerant of specific site conditions. The use of indigenous species is strongly encouraged. Exotic, non-native invasive plant species are strongly discouraged.
- (8) Slope plantings. Landscaping of the area of all cuts and fills and/or terraces shall be sufficient to prevent erosion, and all roadway cuts steeper than 3:1 shall be planted with ground covers appropriate for the purpose and soil conditions, water availability, and environment.

B. Street Trees.

- (1) Location. Street trees shall be installed on both sides of all streets in accordance with an approved landscape plan. Trees shall be spaced evenly along the street between the curb and sidewalk. Where the distance between the curb and sidewalk is less than 5 feet, sidewalks should be placed in a public access easement outside of the right-of-way to create a planting strip at least 5 feet wide to facilitate street tree growth. In areas with wider sidewalks that extend to the curb, trees shall be placed in tree wells with root guard systems. Such tree wells shall have sufficient soil volume to support tree growth as follows:

<u>Tree Size at Maturity (Height in feet)</u>	<u>Soil Volume (in cubic feet)</u>
Large trees (45'+)	200
Medium-sized trees (30')	150
Small trees (to 30')	100

Areas under sidewalks may be used to meet the soil volume requirement provided no more than 50% of the volume is located under such hard paving.

- (2) Spacing. When trees are planted at predetermined intervals along streets, spacing shall depend on tree size.

<u>Tree Size at Maturity</u> <u>(Height in feet)</u>	<u>Planting Interval</u> <u>(in feet)</u>
Large trees (45'+)	40
Medium-sized trees (30'-45')	30
Small trees (to 30')	20

Trees may be planted closer together in order to avoid interference with utilities, roadways, sidewalks, sight easements, and street lights.

- (3) Street Tree Type. Tree type may vary depending on overall effect desired but as a general rule, all street trees shall be large deciduous trees except as needed to achieve special effects. Tree selection shall be approved by the board of jurisdiction.
- (4) Planting Specifications. Street trees shall be substantially uniform in size and shape, and have straight trunks. Trees shall be properly planted and staked in accordance with standards promulgated by the American Nurserymen's Association. Provision shall be made by the developer for regular watering and maintenance until trees are established. Dead or dying trees shall be replaced by the developer during the next suitable planting season.

C. Buffers. Landscaping buffers shall be required to minimize and visually screen any adverse impacts or nuisances on a site or from any adjacent area.

- (1) Landscape buffers shall consist of a combination of deciduous trees, conifers, shrubs, and if appropriate, fences or walls in sufficient quantities and sizes to perform their necessary screening function.
- (2) Buffers may be installed in required yard areas except for reverse frontage buffers where they shall be in addition to the required yard area.
- (3) Buffers shall be continuous except for access drives as approved by the board of jurisdiction. Storm water management facilities, parking, dumpster enclosures, accessory building or above ground structures, and similar encroachments shall not be permitted in the required buffer area.

- (4) The minimum width of a landscape buffer shall be dependent on the proposed use of a property and the land uses adjacent to it in accordance with Table 1.

Table 1. Required Minimum Buffer Widths.

Proposed Land Use	Adjacent Land Use				
	Residential Type A ⁽¹⁾	Residential Type B ⁽²⁾	Commercial	Institutional/ Quasi-public	Industrial
Residential Type A ⁽¹⁾	None	15 ft.	15 ft.	None	25 ft.
Residential Type B ⁽²⁾	15 ft.	None	10 ft.	None	25 ft.
Commercial	15 ft.	10 ft.	None	None	15 ft.
Institutional/ Quasi-public	15 ft.	10 ft.	None	None	15 ft.
Industrial	25 ft.	25 ft.	15 ft.	15 ft.	None

(1) - Residential Type A equals single family detached, duplex and semi-detached dwellings.

(2) - Residential Type B equals all other dwellings except those in institutional settings, i.e. residential health care facilities, skilled nursing facilities and assisted living facilities. The Institutional category shall apply to these exceptions.

- (5) Required buffer widths may be reduced by 5 feet in width if an opaque fence or wall is used in conjunction with plantings and is sufficiently high to visually obstruct the view of persons at ground level. See Chapter 71 of the Town of Secaucus Code for fence and wall regulations.

D. Parking and loading area landscaping. The objectives of the landscape architectural treatment of all parking areas shall be to provide for safe and convenient movement of vehicles, to limit pedestrian/vehicular conflicts, to limit paved areas, to provide for screening from the public right-of-way and adjacent buildings, to reduce the overall visual impact of parking lots, and to provide shade and reduce heat island effects. All non-residential parking lots and residential parking lots in excess of 5 spaces shall conform to the following requirements:

- (6) The minimum width of landscape islands shall be eight (8) feet on the side of parking spaces. If sidewalks are incorporated through the long axis of the landscape islands, their width shall be added to these requirements. Where the parking lot design will result in pedestrians cutting perpendicularly through landscape islands, sidewalks shall be installed at regular intervals through its short axis.
- (7) Parking and loading areas shall be screened by a combination of hedges, fences and/or walls. The minimum screening height at planting shall be

thirty (30) inches and shall have a height of at least 4 feet within three years of installation, except for areas within clear sight areas. Loading dock areas shall be screened with a minimum height of six (6) feet at planting and shall achieve a height of at least ten (10) feet five years after installation. Land use mitigation buffers pursuant to Table 1 may be used to meet these requirements. The board of jurisdiction may also approve a solid masonry wall of brick or architectural concrete masonry units in lieu of such screening.

- (8) Parking lot lighting should be sited within landscape islands, however, without hindering necessary lighting coverage.
- (9) No more than twenty (20) parking spaces shall be placed in one row of parking without an intervening landscape island or depression (if being used for water infiltration purposes).

E. Removal of debris and incompatible material. All stumps and other tree parts, litter, brush, weeds, excess or scrap building materials, or other debris shall be removed from the site and disposed of in accordance with New Jersey Department of Environmental Protection regulations. All material incompatible with plant growth, including but not limited to, asphalt, concrete, stones greater than one inch in diameter, brick, and excessively alkaline or acidic soils shall be removed from planting beds and other areas intended for landscaping to a depth of twenty-four (24) inches. No tree stumps, portions of tree trunks or limbs shall be buried anywhere in the development.

ARTICLE IV Parking Requirements

§ 135-10. Commercial uses.

The following are parking requirements for commercial uses:

Use	Required Parking Spaces
Drive-in restaurant	1 for every 3 persons, based upon maximum occupancy
Bank	1 for every 400 square feet of floor area
Retail sales	1 for every 400 square feet of selling area
Offices	1 for each 500 square feet of floor area
Hotel/motel	1 for each rental unit and additional spaces for restaurants, etc.

**TOWN OF SECAUCUS
COUNTY OF HUDSON, STATE OF NEW JERSEY**

**A RESOLUTION ON BEHALF OF THE TOWN OF SECAUCUS
IN SUPPORT OF SUSTAINABLE LAND USE
(ALSO KNOWN AS THE SUSTAINABLE LAND USE PLEDGE)**

WHEREAS, the Town has previously approved a Resolution supporting participation in the Sustainable JerseyTM Municipal Certification Program; and

WHEREAS, the Mayor and Council have determined that the taking of this Sustainable Land Use Pledge and the continuation and further development of smart growth and development policies is important to the Town and as a municipality in the State of New Jersey; and

WHEREAS, the Town of Secaucus understands that land use is an essential component of overall sustainability for a municipality; and

WHEREAS, poor land-use decisions can lead to and increase societal ills, such as decreased mobility, high housing costs, increased greenhouse gas emissions, loss of open space and the degradation of natural resources; and

WHEREAS, well planned land use can provide for a range of housing options, create walkable communities, preserve open space, create transportation choices, provide for adequate recreation, and allow for the continued protection and use of vital natural resources; and

NOW THEREFORE, BE IT RESOLVED, we, the Town of Secaucus, resolve to take the following steps with regard to our municipal land use decisions with the intent of making Secaucus a truly sustainable community. The Town will review and consider the following principles in the next master plan revision and reexamination report, and work to update our land-use zoning, natural resource protection, and other local ordinances accordingly:

- **Regional Cooperation** - We pledge to reach out to the administrations of our neighboring municipalities concerning land-use decisions when appropriate, continue to work with the New Jersey Meadowlands Commission on land use matters, and to take into consideration regional impacts when making land-use decisions.
- **Transportation Choices** - We pledge to create transportation choices with a Complete Streets approach by considering all modes of transportation, including walking, biking, mass transit and automobiles, when planning transportation projects and reviewing development applications. We will reevaluate our parking with the goal of promoting shared parking and other innovative parking alternatives, and encouraging structured parking alternatives where appropriate.

- **Natural Resource Protection** - We pledge to take action to protect the natural resources of the State and of our Town for environmental, recreational and agricultural value, avoiding or mitigating negative impacts to these resources. Further, we pledge to complete a Natural Resources Inventory when feasible to identify and assess the extent of our natural resources and to link natural resource management and protection to carrying capacity analysis, land-use and open space planning.
- **Mix of Land Uses** - We pledge to continue to use our zoning power to the extent practicable to create a mix of residential, retail, commercial, recreational and other land use types in areas that make the most sense for our municipality and the region, particularly in downtown and town center areas.
- **Housing Options** - We pledge, through the use of our zoning and revenue generating powers, to foster a diverse mix of housing types and locations, including single- and multi-family, for-sale and rental options, to meet the needs of all people at a range of income levels.
- **Green Design** - We pledge to incorporate the principles of green design and renewable energy generation into municipal buildings to the extent practicable and consider invoking such principles when updating our site plan and subdivision requirements for residential and commercial buildings.
- **Future Municipal Facilities Locations** - We pledge, to the extent feasible, to take into consideration factors such as walkability, bikability, greater access to public transit, proximity to other land-use types, and open space when locating new or relocated municipal facilities.

Michael Marra, Town Clerk of the
 Town of Secaucus, County of Hudson, do
 hereby certify that the above is a true
 copy of a resolution approved by the
 Mayor & Council on 8-27-13
Michael Marra
 Town Clerk Mayor

I, Michael Marra, Town Clerk of the
 Town of Secaucus, County of
 Hudson, do hereby certify that the
 above is a true copy of a resolution
 approved by the Mayor and Town
 Council on 8-27-13
Michael Marra
 Michael Marra, Town Clerk

Motion	Yes	No	Abstain	Absent
Second: <u>SP</u>				
<u>RC</u>				
Councilman Jeffas	✓			
Councilman Costantino	✓			
Councilman McKeever	✓			
Councilman Clancy				✓
Councilwoman Pirro	✓			
Deputy Mayor Bueckner	✓			
Mayor Connell	✓			

